

DURSBAN* 4E

INSECTICIDE

FOR THE CONTROL OF INSECT PESTS ON COFFEE

Contains: Chlorpyrifos 480g/l

Kills by → Contact

→ Stomach action

→ Vapour Action

→ Has ovicidal action



Distributed by: (Wasambazaji)

Lachlan Kenya Limited

P.O. Box 49470, 00100 Nairobi

TEL: 2073912/3/4,

MOBILE: 0722 209474, FAX: 2060260

E-MAIL: lachlan@griculture.co.ke

DURSBAN 4: A WIDE SPECTRUM

FOLIAR APPLICATION



HYPOTHENEMUS HAMPEI

COFFEE BERRY BORER

- dosage rate : 1 to 1.5 l/ha
- 1st application when most of the berries have a diameter of 5 mm.
 - 2nd application, three weeks later.



PROPHANTIS AMARAGDINA

BERRY MOTH

- dosage rate : 1.5 l/ha
- After the main flowering, if the buds of young berries are being eaten, spray immediately before the caterpillars bore, covering all sides of the berries.
 - 2nd spray, five weeks later.



ANTESTIOPSIS SPP.

ANTESTIA BUG

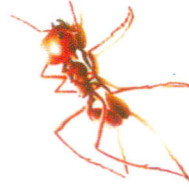
- dosage rate : 1 to 1.5 l/ha
- treat at :
- 2 adults or nymphs per tree in **dry area**.
 - 1 adult or nymph per tree in **wet area**



LEUCOPTERA SPP

LEAFMINERS

- dosage rate : 1 to 1.5 l/ha
- 1st application before 20% of leaves show fresh mines or if 30 moths are found when the trees are shaken vigorously.
 - 2nd application 2 weeks later



ICERYA PATTERSONI

ANTS

- dosage rate : 1 l/ha
- Apply 14 days before picking.



DIARTHROTIRIPS COFFEAE

THRIPS

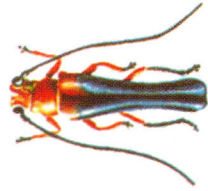
- dosage rate : 1 l/ha
- Treat at 1 to 2 thrips per leaf.

BARK BASAL TREATMENT

DIRPHYA NIGRICORNIS

YELLOW-HEADED BORER

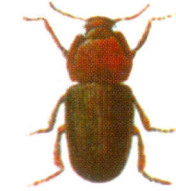
- dosage rate : 2 l/20 l of water
- Enlarge the frass hole in the main stem and using a pen filler or oil can squirt the solution into the hole.
 - Clear the ground under affected trees to check larvae not killed in the first round. Repeat treatment if necessary.



APATE MONACHUS

BLACK BORER

- Push up a cotton wool dipped in DURSBAN 4 into the gallery.



GONOCEPHALUS SIMPLEX

DUSTY BROWN BEETLE

- dosage rate : 1 l/20 l of water
- On young coffee plantation, spray 150 ml per tree around the base of stem.



ANTHORES LEUCONOTUS

WHITE BORER

- dosage rate :
- 700 ml/20 l of water
(plus 15 mg Methylene blue)
- Treat just before the onset of the rains
 - Repeat the treatment every year.

SYSTATES POLLINOSUS

SYSTATES WEEVIL

- dosage rate : 15 ml l/20l of water
- Spray the mulch and base of stem preferably late in the evening.

GREEN SCALE - BROWN SCALE

KENYA MEALYBUG - ANTS

- dosage rate : 700 ml/20 l of water
(plus 15 mg Methylene blue)
- Treat the trunk with a band 50 to 90 cm from the ground level using a spray lance or a brush.

GASCARDIA BREVICAUDA

WHITE WAXY SCALE

- dosage rate : 700 ml/20 l of water
(plus 15 mg Methylene blue)
- Treat the trunk with a band 50 to 90 cm from the ground level using a spray lance or a brush.

