



# Aton AZ<sup>®</sup>

## More advantages



## Optimum results



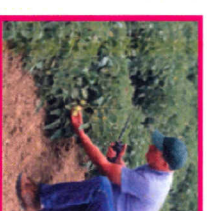
### 1 Maximum speed in direct absorption and assimilation

The high content of L- $\alpha$ -available amino acids, which are not linked to other amino acids and are characterised by their low molecular weight, allows more rapid absorption and assimilation by the crops.



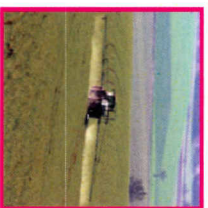
### 1 Immediate crop recovery

Hence, the crops react quickly to stressful situations and/or in preventing or correcting certain deficiencies. In addition, due to the high content of protein Nitrogen, the crops recover efficiently and immediately.



### 2 Carrier effect and versatility in the application

Due to their nature, amino acids have a complexing capacity as regards certain micronutrients, agrochemical products and fertilizers. This feature can be used in combined applications of the products in this range with other active matter. They are also recommended in both foliar applications and soil applications, mainly via drip irrigation.



### 2 Maximum efficiency and profitability

The use of this range allows increased absorption and assimilation of micronutrients, agrochemical products and fertilizers, in both foliar and soil applications. They therefore prevent and correct (Ca, Fe, Mn, B and Mo), and maximize the efficiency and profitability of the combination of products in this range with other active matter.



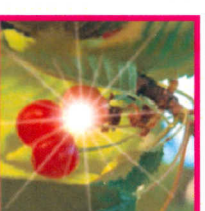
### 3 Energy saving and less recovery time

The processes that plants use to synthesise amino acids (amination and transamination) are particularly expensive in terms of energy. The application of the Bio-nutrients and Amino Acids Range allows plants to save this extra energy expenditure since they do not have to synthesise amino acids and can invest it in other processes. This reduces the recovery time for crops in adverse situations.



### 3 Strength and vigour to combat stress

This range of products strengthens and improves the reaction of crops when subjected to all kinds of conditions. The supply of Nitrogen (which is fast-acting) and available amino acids allows the crops' maximum production potential to be developed.



### 4 Decisive solution in critical moments

This range is especially recommended under adverse climate conditions (water stress, pests and diseases and temperature extremes such as hail, heat waves and changes in diurnal temperatures), critical periods (transplant, early growth stages and phytotoxicity), and certain phenological stages (pre-flowering, ripening, early fruit development and maturing).



### 4 More and better quality crops

In critical conditions plants synthesise amino acids. By using this product range a rapid, efficient recovery is guaranteed. Moreover, by exerting a stimulating and invigorating effect on plant development, the products encourage fruit development and size, improve flowering and ripening and increase crop yield and quality.

## Amino acids: essential elements

Amino acids are essential for the nutrition of any living organism as they are **structural protein units**, i.e. they are the basis for building peptide chains that make up proteins.

Consequently, they determine the majority of the most important properties that characterize proteins and control many physiological processes: enzymatic, store, constitution, make-up of the chlorophyll etc.

## Vital natural formulae

This entire range is formulated with amino acids. Being **natural organic biomolecules** with a low molecular weight, this results in processes that work with **nature** and the **environment**. The products with Aton Fe®, Aton Mn and Aton Zn are approved organic products in accordance with the Ecocert international certificate.



One of the keys to the quality of Tradecorp's Bio-nutrients and Amino Acids range is the method used to **obtain amino acids**. This process provides end products with:

- Higher content of available amino acids.
- Predominance of L configuration
- Higher content of protein Nitrogen and organic matter.

In addition, the products in this range are produced using **homogenous raw material**, with no added chlorine, and they present a **complete, balanced aminogram**, as they contain an optimum ratio between the most important and efficient amino acids such as proline, glutamic acid, glycine, alanine and arginine – important from an agricultural view point.

## Foliar spraying

150-300 cc/hl,

2-5 applications every 1-2 weeks

## Fertigation

Applications of 3-4 l/ha every 1-2 weeks.

# Aton<sup>®</sup> AZ



General structural formula of α-amino acids

## COMPOSITION (w/w)

Aminoacids:	5,0 %
Iron (Fe):	0,9 %
Manganese (Mn):	0,7 %
Zinc (Zn):	1,1 %
Calcium (CaO):	1,0 %
Boron (B):	0,09 %
Molybdenum (Mo):	0,09 %

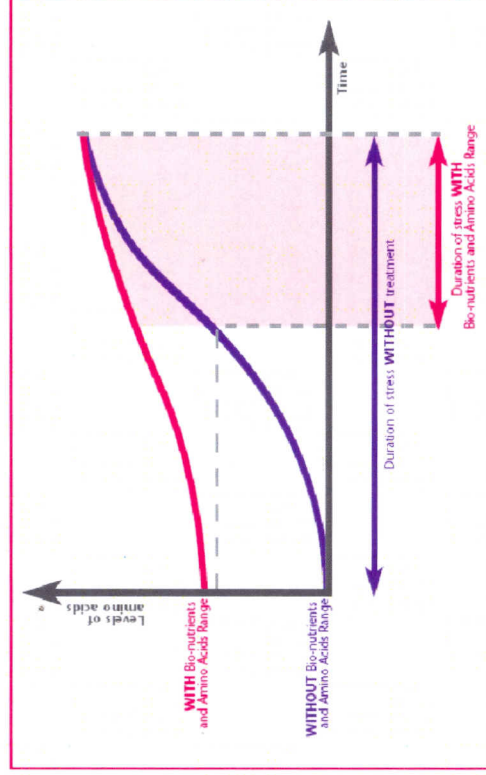
density: 1.2

## Mechanisms of action

### 1. Direct supply of amino acids and rapid assimilation

This direct supply encourages a **better** reaction to critical times (water and thermal stress, disease and pests, nutrition deficiencies etc) as shown in the figure.

The rapid, efficient supply of amino acids from the Bio-nutrients and Amino Acids Range in critical periods reduces the time that the plant suffers stress, minimizing any negative stressful effects.



### 2. Greater enzyme and metabolic activity

Since amino acids determine the majority of protein properties and they are present in the plant's cells and intercellular fluids, their role is crucial by boosting the various physiological processes.

Greater enzyme and metabolic activity has a beneficial effect in terms of:

- A. **Production** through increased harvest linked to better fruit quality.
- B. **General plant health**, since increased plant development and vigour makes the plant less likely to suffer from stress.

A technology of:

**TRADECORP**  
Nutri-Performance

Distributed by:

**Lachlan @griculture**

Tel: +254 020 2073912 / 2073913 / 2073914

Fax: +254 020 2060260

Email: [lachlan@griculture.co.ke](mailto:lachlan@griculture.co.ke)